



## Social-Awareness

### ABOUT MOVE THIS WORLD

Move This World cultivates the development of social and emotional learning (SEL) skills to empower students to navigate the complex and rapidly-changing realities of our world. An SEL program that has impacted the lives of over one million students across 35 states, Move This World provides educators and students with a robust, daily curriculum designed to strengthen social and emotional wellbeing in order to create and maintain healthy environments where effective teaching and learning can thrive. Move This World's extensive online library of PreK-12 videos and resources are rooted in creative expression and designed to help students develop a common language to improve communication, build trust, and create stronger communities. For more information: [www.movethisworld.com](http://www.movethisworld.com)

# Frozen

by Move This World

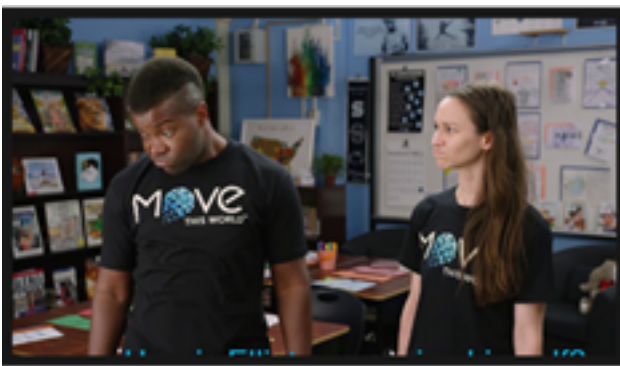
# Frozen

## Primary Competency:

- Social Awareness

## How *Frozen* Impacts Students:

Both kids and adults express their emotions through their words and their bodies. *Frozen* helps us explore the different ways we can express our emotions using our bodies and understand the emotions of others by looking at their bodies. Make sure to pay attention to the different ways that people express the same emotion in their body. The more we practice, the easier it will be to understand others.



[Link to \*Frozen\* video.](#)

## Skills:

- Empathy
- Respect for Others

## How to facilitate *Frozen* in your classroom:

- Load the video before students come into the class & check that the sound/ volume is working.
- Students can do this standing at their desks or gathered all together at the front of the room.
- You will be prompted to select Emotional Building Block (ABC) words and student leaders to do the frozen images.
- Follow along with your students! Reinforce these skills and model active participation.

## ENGAGE STUDENTS FURTHER WITH NEXT-LEVEL PROMPTS:

- Have the student leaders continue modeling their frozen statues for the rest of the class. Next, call on members of the class to explain how their peers' statues demonstrate the emotion you picked.
- Encourage students to point out the specific aspects of the statue that helped them figure out the emotion itself. What were some of the cues conveyed with body language?